

Booster Amplifier Card

# PRE-AMPLIFIER AND BOOSTER AMPLIFIER



Amplifier Card in Chassis

## KEY FEATURES AND BENEFITS

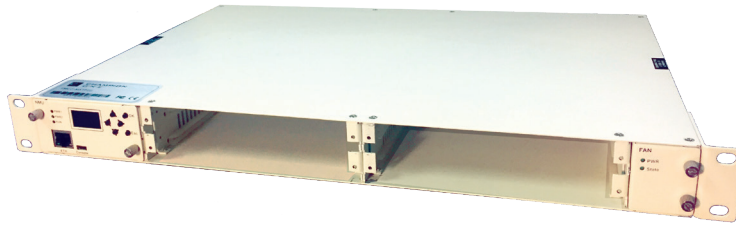
Champion ONE's optical pre-amplifier and booster amplifier cards are designed for WDM networks in a number of applications, including FttC, FttB, CATV networks, WAN networks, and more. They can amplify the C-Band signal with or without middle stage access (MSA), increasing the flexibility of your network. The cards also offer exceptional gain flatness and low signal noise.

Both the pre-amplifier and booster amplifier can be housed and managed in Champion ONE's 1RU 4-slot Amplifier Chassis (shown on page 2).

Both amplifier cards and the management chassis are backed by Champion ONE's industry-leading 5-year warranty.

## TECHNICAL SPECIFICATIONS

Specification	Pre-Amplifier	Booster Amplifier
Part #	FMC2-OPA20	FMC2-OBA13
Wavelength Range (nm)	1529 – 1564	
Typical Wavelength (nm)	1550nm	
Saturation Output Power (dBm)	13	
Input Power (min/max, dB)	-30 / -5	-30 / -10
Gain (dB)	28	26
Noise Figure (typ/max, dB)	4.5	5.0
Gain Flatness (dB)	1.38	
Gain Ripple (dB)	≤ ± 0.75	
Optical Isolation at Output (dB)	≥ 30	
Return Loss (dB)	≤ 45	
PMD (ps)	≤ 0.5	
PGD (dB)	≤ 0.3	
Operating Temperature (°C)	-5 to 65	
Voltage Options (V)	110VAC or 48VDC	



# 1 RU 4-SLOT AMPLIFIER CHASSIS

Manage your pre-amplifier, booster amplifier, or both in this compact chassis that occupies only a single standard rack unit. Includes management card, fan card, and **(2)** redundant power supplies.

PART NUMBER: **FMC2-MSTP1U**

## SERVICE AND SUPPORT

Running a network or selling network services and products can be a highly competitive endeavor. To help differentiate your business and enable you to provide more cost effective infrastructure, you require a partner that provides competitive pricing and vertical market expertise. At Champion ONE we understand your needs. We leverage our skills and relationships to:

- Provide network design services and help you explore alternative network designs you may not have considered
- Provide technical and sales support when you need it
- Accept orders for same day shipment up to 3:00 PM EST
- Offer some of the longest warranties in the industry
- Offer a 30-day return policy
- Build a long-term supplier partnership with you

You can rely on Champion ONE, not only for the highest levels of availability for the products you need, but the technical support, customer service and cost consideration you deserve. Our goal is your complete satisfaction.

## THE CHAMPION ONE COMMITMENT



For over twenty years, we at Champion ONE have been delivering great value to our customers through high-quality products at competitive prices. As one of the leading suppliers of compatible optical transceivers and a major supplier of optical networking solutions, we take great pride in building long-term relationships as a trusted partner. In this spirit, everything we bring to market bears the Champion ONE Shield™, which strengthens this trust through five core promises: Performance, Availability, Compatibility, Protection, and Value.

Product photos are representative samples only.

Champion ONE and the Champion ONE logo are registered trademarks of Champion Optical Network Engineering, LLC. All other trademarks, service marks, registered marks, or registered service marks are the property of their respective owners. Champion ONE assumes no responsibility for any inaccuracies in this document. Champion ONE reserves the right to change, alter, or otherwise revise this document without notice.

## GLOBAL HEADQUARTERS

Champion ONE  
23645 Mercantile Road  
Cleveland, OH 44122  
Phone: 800-860-7466  
Fax: 216-831-2541  
e-mail: [sales@championone.com](mailto:sales@championone.com)  
[www.championone.com](http://www.championone.com)

3.15.2017 – REV 3.3